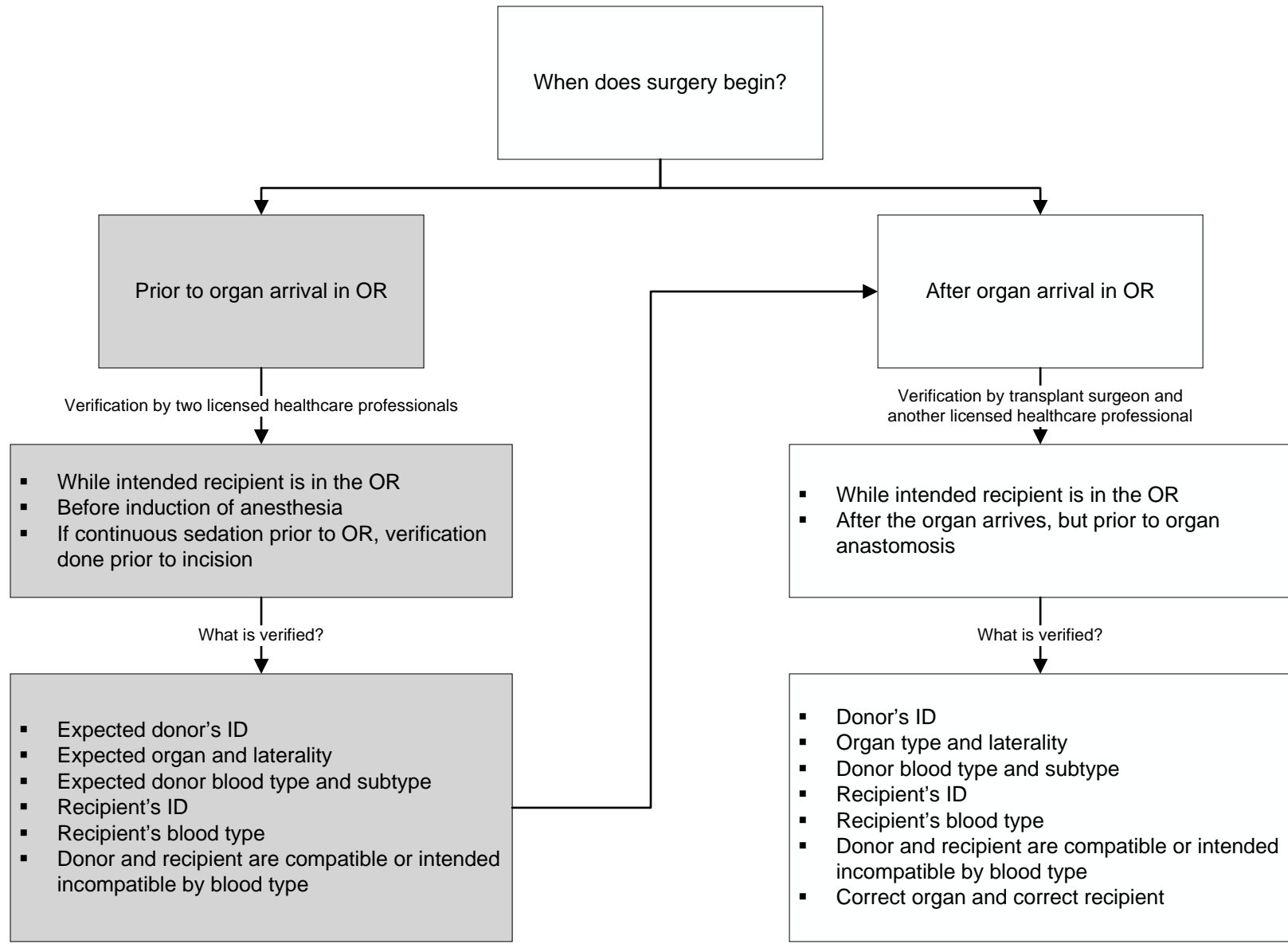
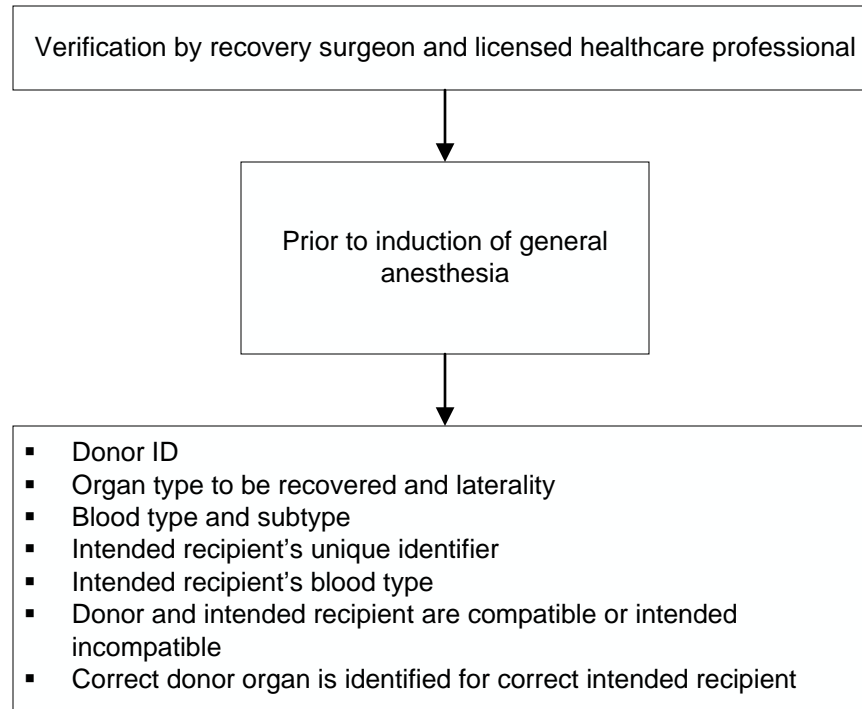


# Pre-Transplant Verification for All Recipients



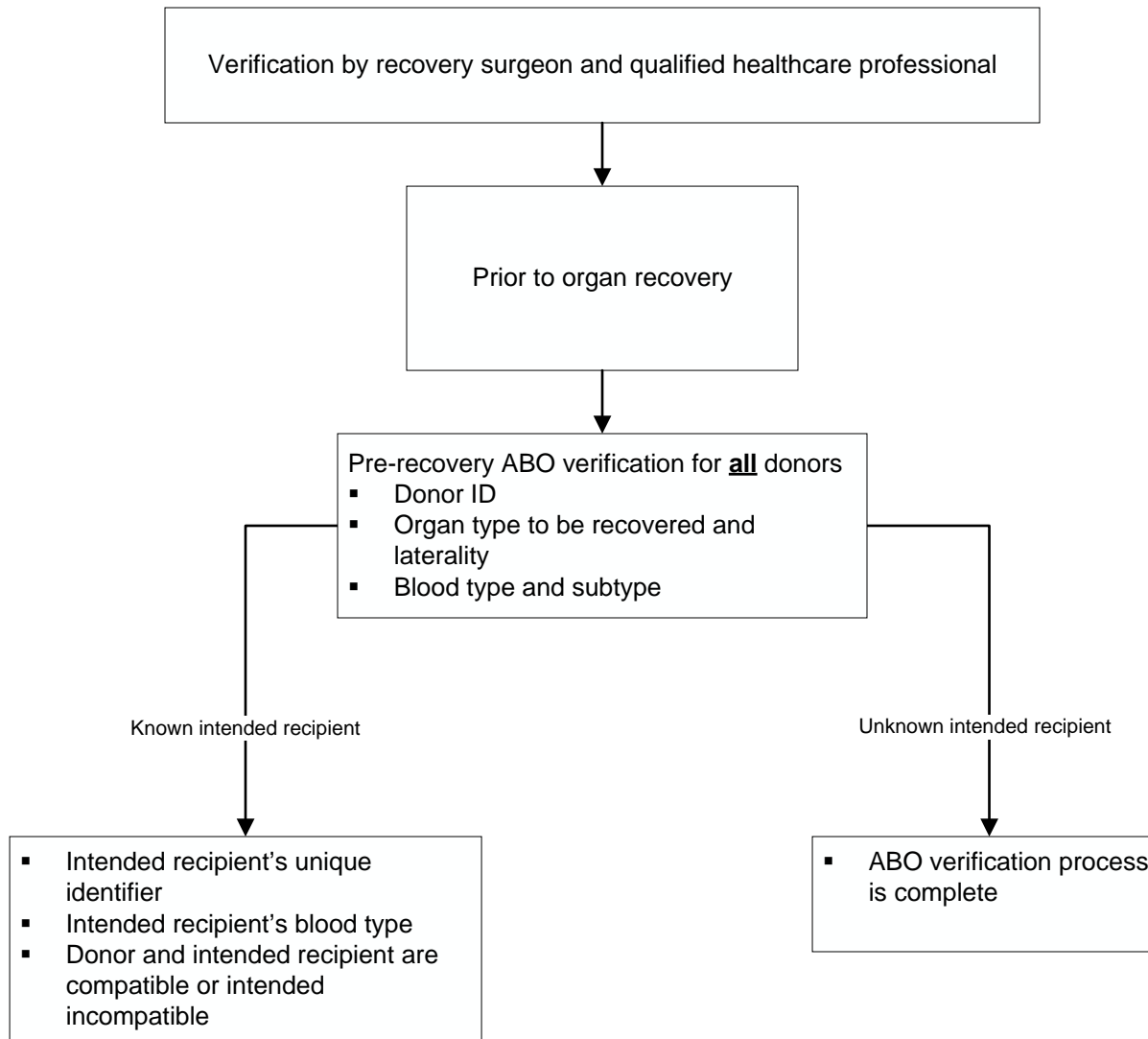
OPTN policy indicates that transplant hospitals, living donor hospital, and OPOs must have a protocol for resolving primary blood type conflicts and defining and using qualified healthcare professionals for blood type reporting and verification. CMS regulations and interpretive guidance indicate recovery hospitals have surgeons and licensed healthcare professionals involved in ABO verification.

## Pre-Recovery Verification – Living Donor



OPTN policy indicates that transplant hospitals, living donor hospital, and OPOs must have a protocol for resolving primary blood type conflicts and defining and using qualified healthcare professionals for blood type reporting and verification. CMS regulations and interpretive guidance indicate recovery hospitals have surgeons and licensed healthcare professionals involved in ABO verification.

# Pre-Recovery Verification – Deceased Donor



OPTN policy indicates that transplant hospitals, living donor hospital, and OPOs must have a protocol for resolving primary blood type conflicts and defining and using qualified healthcare professionals for blood type reporting and verification. CMS regulations and interpretive guidance indicate recovery hospitals have surgeons and licensed healthcare professionals involved in ABO verification.